



LIFE Methodology



LIFE Institute

The need to conserve nature through the maintenance of natural heritage and through strengthening the engagement of the private sector with environmental issues has set the scene for the creation of **LIFE Institute**.

Established in 2009, LIFE Institute promotes the engagement of the business sector on conservation of biodiversity, strategically guiding organizations to guarantee the effectiveness of their environmental agenda making it compatible with current global challenges.



LIFE Institute

is responsible for the technical development, management and international expansion of **LIFE Methodology** among other tools focused on the management for sustainability.

LIFE Methodology

LIFE Methodology was developed to strategically support organizations on the decision making process regarding their sustainability with focus on maintenance and resilience of ecosystem services.



Robust and measurable methodology



Integrates business and biodiversity



Adaptable to any country or region



Applicable to businesses of any sector or size



LIFE Methodology

enables an organization to objectively quantify its environmental impacts. It also provides strategic guidance to organizations to guarantee the effectiveness of their conservation actions.

How it works

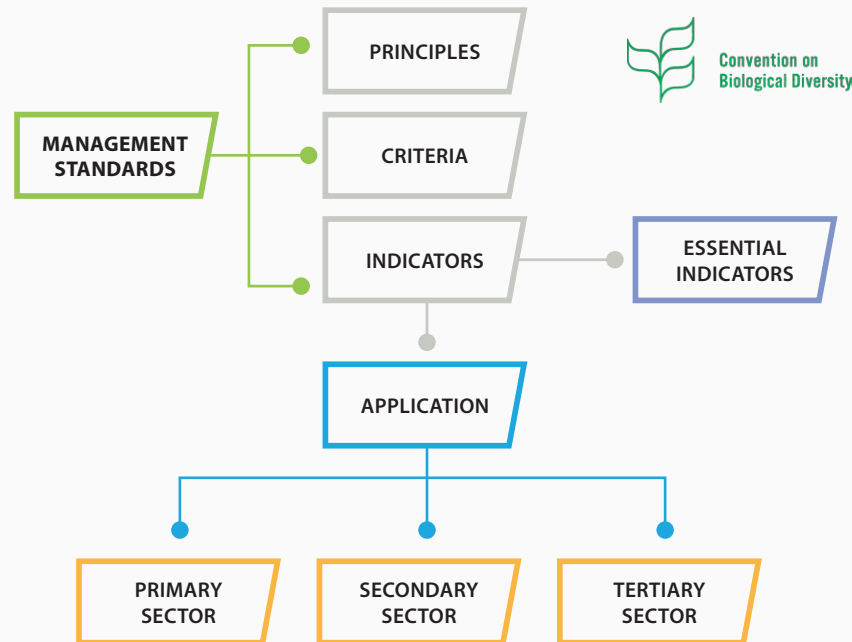
LIFE Methodology consists of 4 steps:



STEP 1

Verifies environmental management focusing on biodiversity

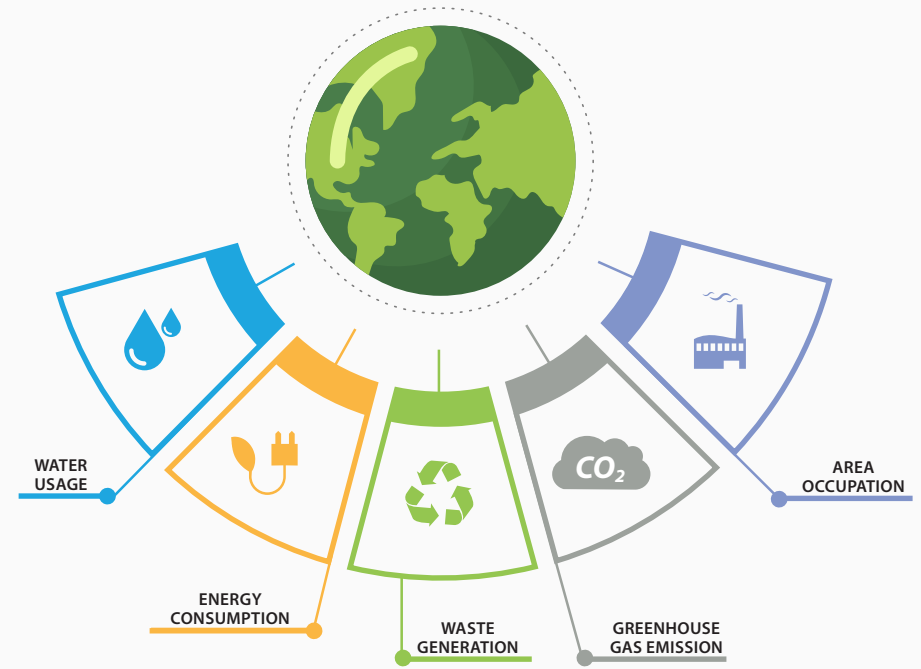
Our management standards are derived from premises based on the objectives of the Convention on Biological Diversity, then structured into Principles, Criteria and Indicators.



STEP 2

Calculates organization's biodiversity impact index

The organization calculates and evaluates its impact based on five environmental aspects (listed below) taking into account its quantity and severity.



STEP 3

Evaluates the effectiveness of organization's actions on biodiversity

Actions implemented and strategies for conservation are evaluated based on a guideline provided by LIFE Methodology.

This guideline includes a scoring system based on: (1) international and national conservation priorities and (2) effectiveness of biodiversity conservation actions.

Scoring system for conservation actions

The scoring hierarchy was established to highlight and recognize initiatives with greater potential for the maintenance of environmental services and conservation of biodiversity in a shorter period of time.



STEP 4

Calculates the minimum performance in conservation actions required for compensating its residual impact index

Based on the organization impact, a minimum performance in biodiversity conservation actions is calculated for each organization.



LIFE Certification

Any organization that complies all steps of **LIFE Methodology** and reaches its minimum conservation performance can require a third part audit to apply for **LIFE Certification**.

LIFE is a Standard Development organization. Having third-party certification, independent Certifying Bodies accredited by **LIFE Institute** are responsible for official audits for **LIFE Certification**.



LIFE Key Web

LIFE Key Web is a tool that improves the efficiency of environmental data management and reporting.

The use of the software also allows evaluation of conservation actions implemented by the organization.

The software generates detailed and executive reports supporting the decision making process.





LIFE INSTITUTE

www.institutolife.org

Curitiba – PR – Brazil
contato@institutolife.org
+ 55 41 3253 7884



LIFE Institute