



POSIGRAF

LIFE Institute

LIFE Institute is responsible for the technical development and management of **LIFE Methodology**, integrating business and biodiversity.

LIFE Methodology provides strategic guidance to organizations on how to consider biodiversity conservation and maintenance of natural resources on their management and decision-making processes.

LIFE Key is a management software that incorporates **LIFE Methodology**.

The use of **LIFE Methodology** assists organizations on meeting ESG criteria related to environmental issues by:

✓ Measuring business pressure on natural resources, considering environmental aspects such as emissions of greenhouse gases, consumption of energy and water, land cover, and waste generation.

✓ Evaluating business' risks and opportunities related to the business' pressure on natural resources, including their supply chain.

✓ Helping decision makers to strategically guide their investments on conservation efforts.



LIFE INSTITUTE

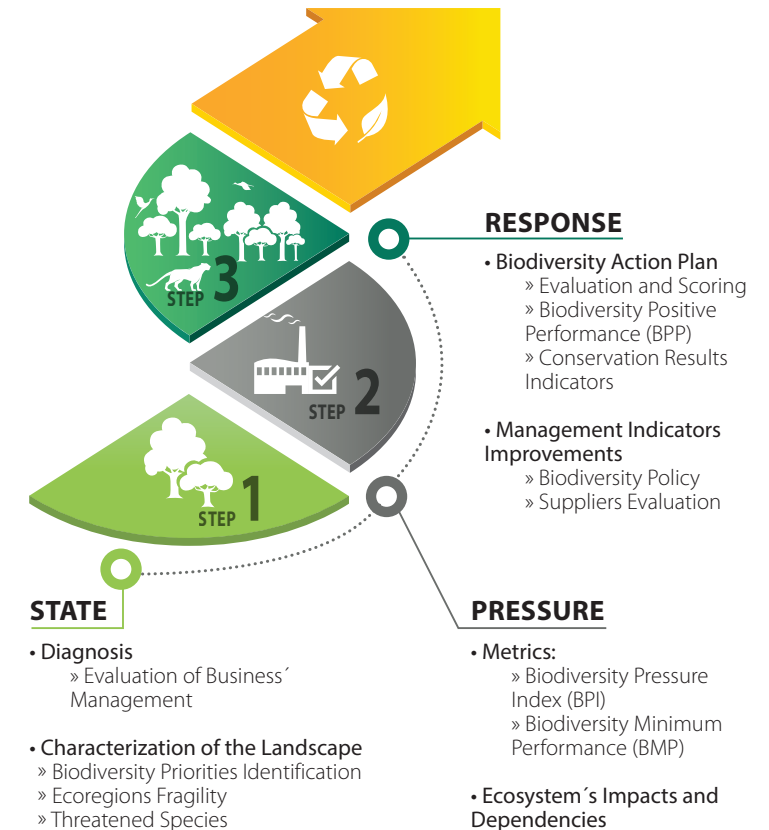
LIFE International in Brazil
LIFE Europe in Spain
contato@institutolife.org

 /lifecertification

 /company/instituto-life

www.institutolife.org/en

LIFE Methodology



Integration with global initiatives



LIFE Methodology is aligned to **85%** of targets directly related to the integrity of Biosphere.



LIFE Methodology integrates **90%** of GRI biodiversity-related topics.

This success case shows the trajectory of Posigraf, using LIFE Methodology



Posigraf is part of the Positivo Group which, since 1972, has contributed to Brazil's development and is present in more than 40 countries with its products and services. It consolidated its leadership in all areas in which it operates: Teaching, Educational Solutions, Technology, Graphics and Culture. With more than 45 years, Posigraf is increasingly consolidated in the national printing market.

One of the largest printing companies in Latin America, Posigraf is the first Brazilian industry to be recognized by LIFE Certification.

The LIFE Certification is focused on the Production Center, the Distribution Center and the Admin Center based in Curitiba-PR.

1. Biodiversity Management

Improvements on Biodiversity Management

Different actions were taken by Posigraf management so that the organization showed its commitment to LIFE biodiversity management's indicators. See some examples.

Disclosure of organization's commitments to biodiversity conservation on company's website

Analysis of the company's links with the international agreements related to biodiversity conservation

CERTIFICADO Nº 0000.000
instituto.life.org/0000.000

Implementation of a Biodiversity Conservation Plan

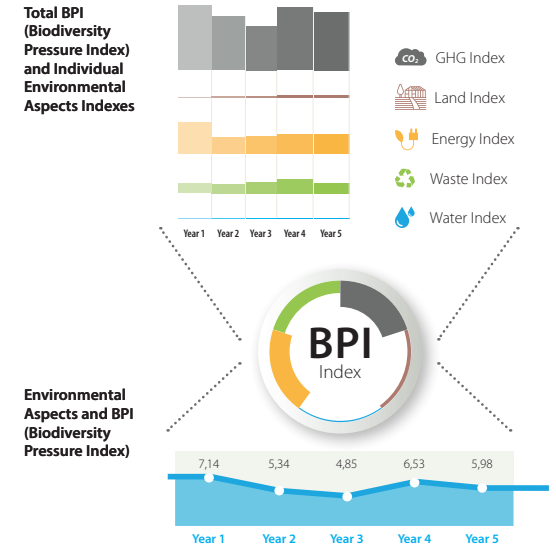
Refinement of data to calculate GHG emissions



Arquíde/Di

2. Biodiversity Pressure Index

The Biodiversity Pressure Index (BPI) is calculated using data from different environmental aspects: water and energy use, GHG emissions, land cover, and waste generation. This index allowed the definition of a minimum score in biodiversity commitment for Posigraf.



3. Biodiversity Positive Performance

As a response to compensate the BPI the company has to accomplish a Biodiversity Positive Performance (BPP) implementing conservation actions.



The main action carried out by Posigraf for biodiversity conservation is the adoption of **Uru Reserve**. Located at Atlantic Forest, Uru is one of the last natural remaining of Araucaria Forest with 129 hectares.

